



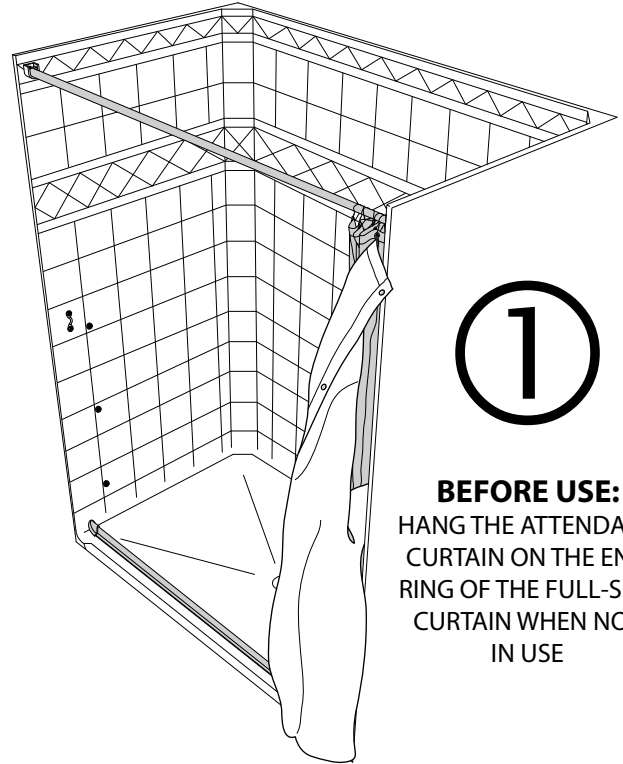
www.best-bath.com

## Specifications

# Attendant Shower Curtain Standard - White

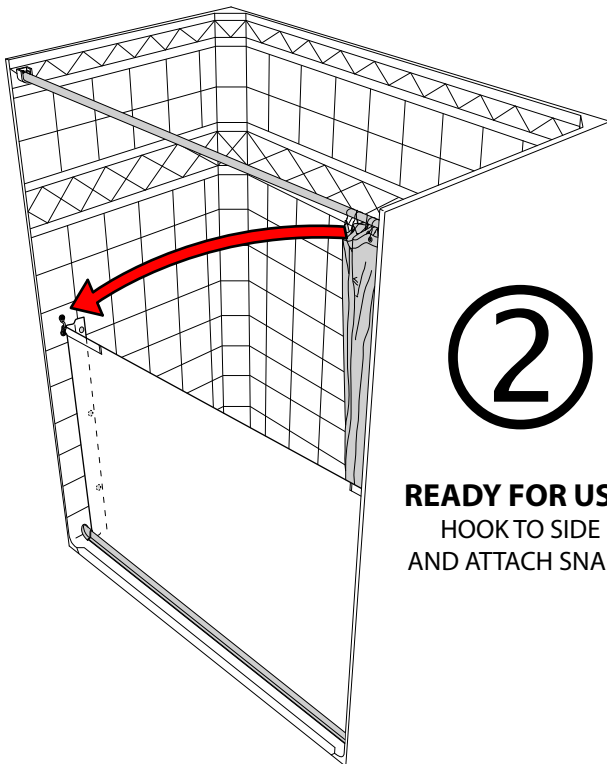
## Attendant Series Shower Curtain, White

- Rubber tubing allows attendant to lean in to assist bather without getting wet
- Material: Vintex SoffTICK Linen 50099-10.5
  - Vintex Safe Guard® Certified
  - Phthalate free
  - Environmentally friendly, no heavy metals as per Safe Guard® certification
  - Elegant linen surface finish
  - Permanent fluid barrier
  - Flame retardant for the life of the fabric
  - Hypo-allergenic, non-irritating
  - Combats bacterial & fungal growth
  - Durable polyester base fabric
  - Light weight
- Color: White
- Porcelain weights sewn into the bottom hem
- Stainless steel hooks, snaps, screws and eye straps
- Sized to fit specific Best Bath models; custom sizes available



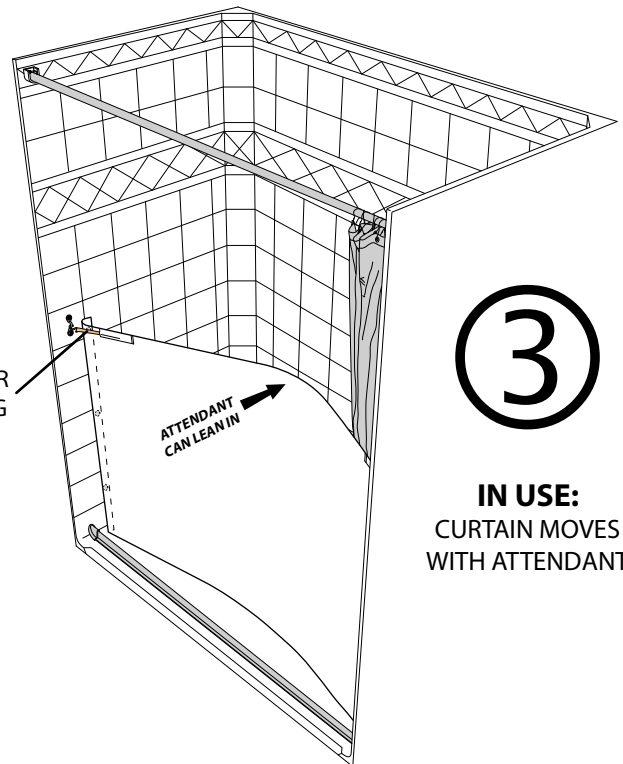
# 1

**BEFORE USE:**  
HANG THE ATTENDANT CURTAIN ON THE END RING OF THE FULL-SIZE CURTAIN WHEN NOT IN USE



# 2

**READY FOR USE:**  
HOOK TO SIDE  
AND ATTACH SNAPS



# 3

RUBBER TUBING

ATTENDANT CAN LEAN IN

**IN USE:**  
CURTAIN MOVES  
WITH ATTENDANT



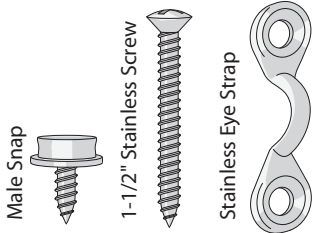
www.best-bath.com

## Installation Instructions

# Attendant Shower Curtain

ASC

### Included Hardware



x 6

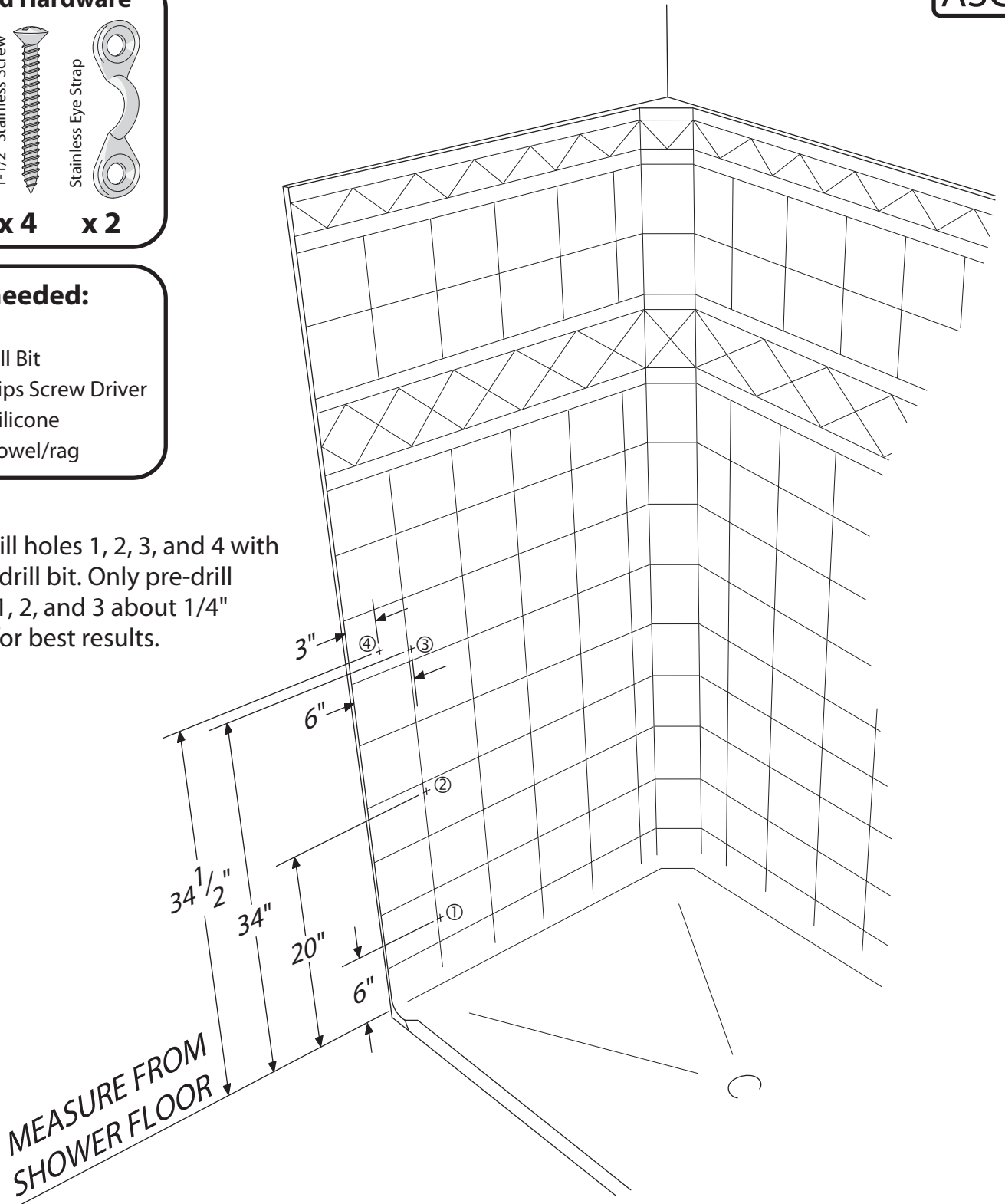
x 4

x 2

### Tools needed:

- Drill
- 1/8" Drill Bit
- #2 Phillips Screw Driver
- 100% Silicone
- Paper towel/rag

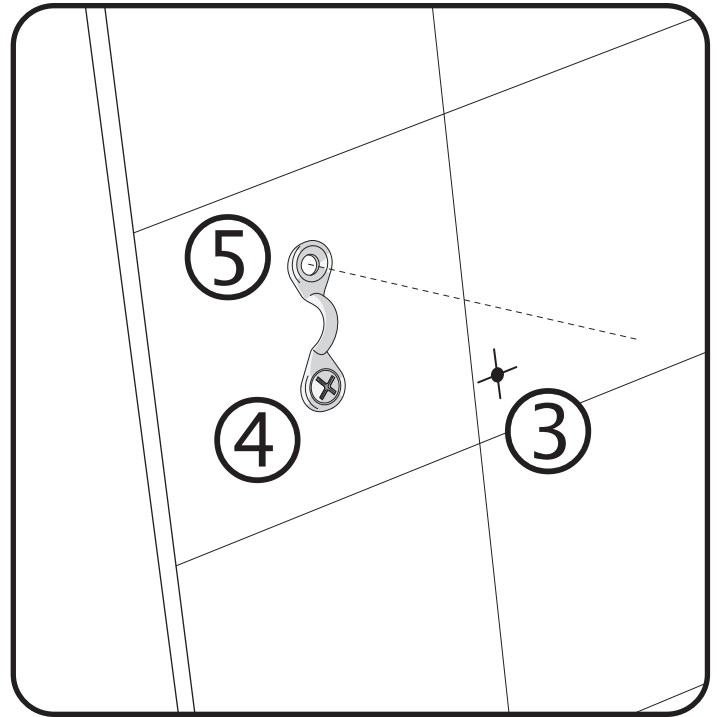
1. Pre-drill holes 1, 2, 3, and 4 with a 1/8" drill bit. Only pre-drill holes 1, 2, and 3 about 1/4" deep for best results.



SEE BACK FOR ADDITIONAL  
IMPORTANT INSTRUCTIONS



2. Temporarily attach the eye strap with the 1-1/2" screw in hole 4.
3. Pre-drill hole 5, then remove the screw from hole 4.



4. Put a small dab of 100% silicone over all holes, and insert the male snaps and the eye strap screws. Wipe away any excess silicone with paper towel or rag.

